



**Boydell Court, St Johns Wood Park, St Johns
Wood, London, NW8**

£1,400 per week

Boydell Court, St Johns Wood Park, St Johns Wood, London, NW8

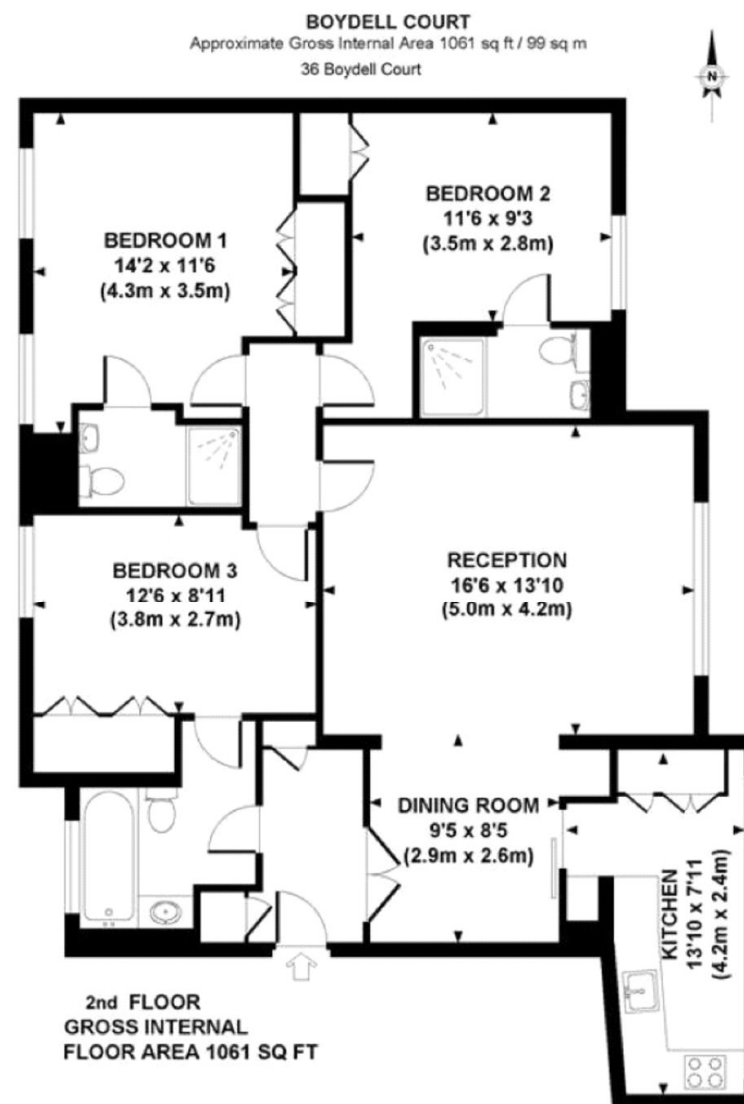
A newly refurbished three bedroom apartment situated on the second floor of a popular purpose built block with lift and 24 hour concierge. The property is ideally located for both St John's Wood and Swiss Cottage underground stations and benefits from communal heating and hot water.

The apartment comprises a good size reception room, fully fitted kitchen and three bathrooms (2 en suite).

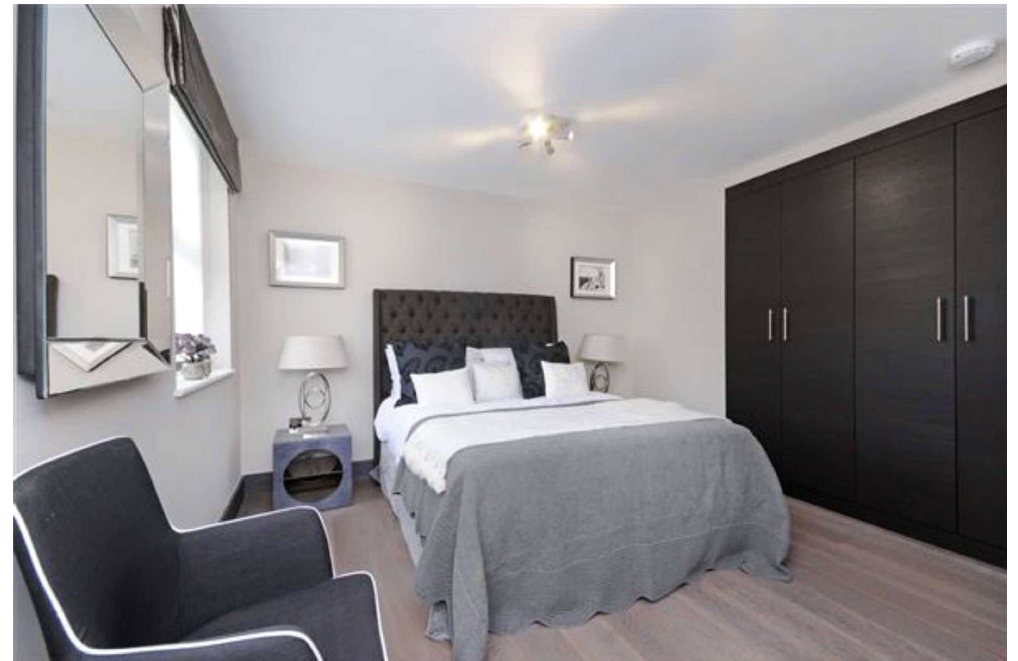
Available from 18th September 2025 on a furnished or unfurnished basis.

Council Tax Band: F, Local Authority: Camden, EPC Rating: C

- 3 Bedrooms
- 3 Bathrooms
- 1 Reception Room
- Kitchen
- 24 Hour Porter
- Lift
- Communal Garden
- Parking



Although every attempt has been made to ensure accuracy, all measurements are approximate.
The floor plan is for illustrative purposes only and not to scale. Measured in accordance to RICS standards.
DE-PHOTOGRAPHY.NET

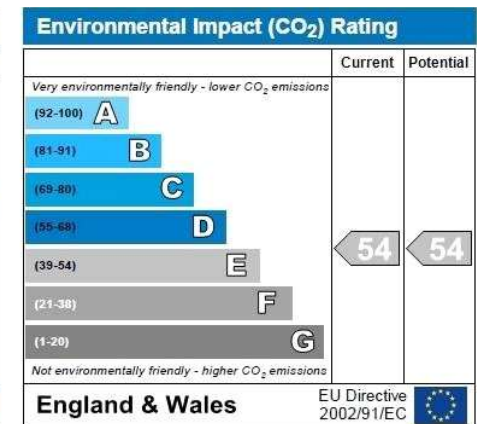
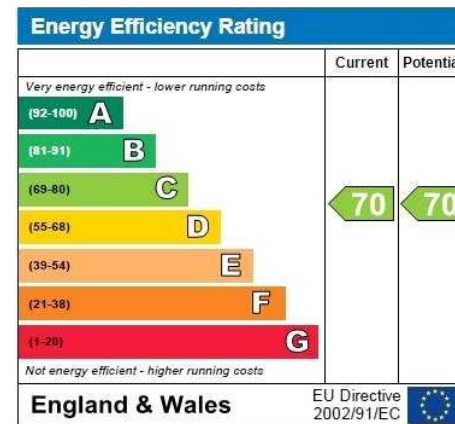




Laurence Leigh Residential

60 Queens Grove
St Johns Wood
NW8 6ER

T: 020 7483 0101
E: info@laurenceleigh.com
www.laurenceleigh.com



Company Registered Number: 6304836.
Registered Office Address 40 Queen Anne Street, London, W1 9EL, England

Disclaimer

Every attempt has been made to ensure accuracy, however these property particulars are approximate and for illustrative purposes only. They have been prepared in good faith and they are not intended to constitute part of an offer of contract. We have not carried out a structural survey and the services, appliances and specific fittings have not been tested. All photographs, measurements, floor plans and distances referred to are given as a guide only and should not be relied upon for the purchase of any fixture or fittings. Lease details, service charges and ground rent (where applicable) are given as a guide only and should be checked prior to agreeing a sale.