



**Prince Of Wales Terrace, Kensington, London, W**

**£3,650 per week**

## Prince Of Wales Terrace, Kensington, London, W8

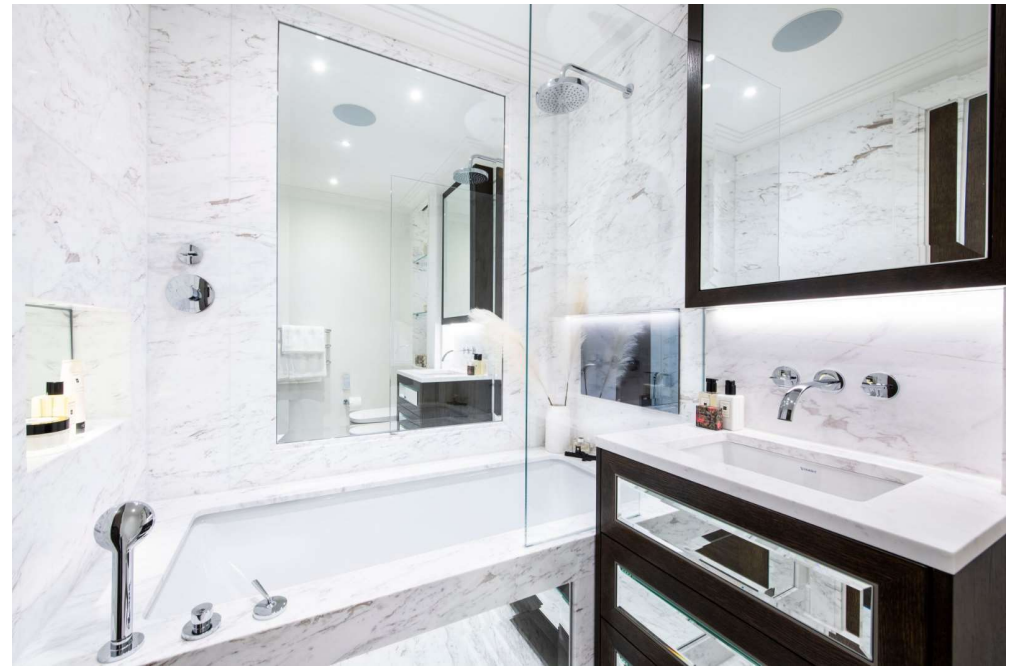
A beautiful, interior designed two double bedroom two bathroom apartment situated on the 3rd floor with lift of a stucco fronted period conversion comprising 1120 sq ft.

The apartment benefits from a good size reception room with wood floors and doors to a large balcony, an open plan fully fitted kitchen with Miele appliances, master bedroom with fitted wardrobes and ensuite bathroom with tv, second double bedroom with en suite shower room.

Available immediately on a furnished basis.

Council Tax Band: G, Local Authority: Kensington and Chelsea







## Laurence Leigh Residential

60 Queens Grove  
St Johns Wood  
NW8 6ER

T: 020 7483 0101

E: [info@laurenceleigh.com](mailto:info@laurenceleigh.com)

[www.laurenceleigh.com](http://www.laurenceleigh.com)

Company Registered Number: 6304836.

Registered Office Address 40 Queen Anne Street, London, W1 9EL, England

### **Disclaimer**

Every attempt has been made to ensure accuracy, however these property particulars are approximate and for illustrative purposes only. They have been prepared in good faith and they are not intended to constitute part of an offer of contract. We have not carried out a structural survey and the services, appliances and specific fittings have not been tested. All photographs, measurements, floor plans and distances referred to are given as a guide only and should not be relied upon for the purchase of any fixture or fittings. Lease details, service charges and ground rent (where applicable) are given as a guide only and should be checked prior to agreeing a sale.